

EPIC RESEARCH

India's Leading Financial Advisory
First to be Rated by **D&B**, **SMERA**
& **NSIC**



Our Presence

Epic Research India

411 Milinda Manor (Suites 409- 417)

2 RNT Marg. Opp Central Mall

Indore (M.P.)

Hotline: +91 731 664 2300

Or give us a missed call at

026 5309 0639

HNI & NRI Sales Contact Australia

Mintara Road, Tarneit, Victoria. Post Code 3029

Phone.: +61 422 063855

HNI & NRI Sales Contact USA

2117 Arbor Vista Dr. Charlotte (NC)

Cell: +1 704 249 2315

Toll Free Number

1-800-200-9454

All queries should be directed to

Info@epicresearch.co

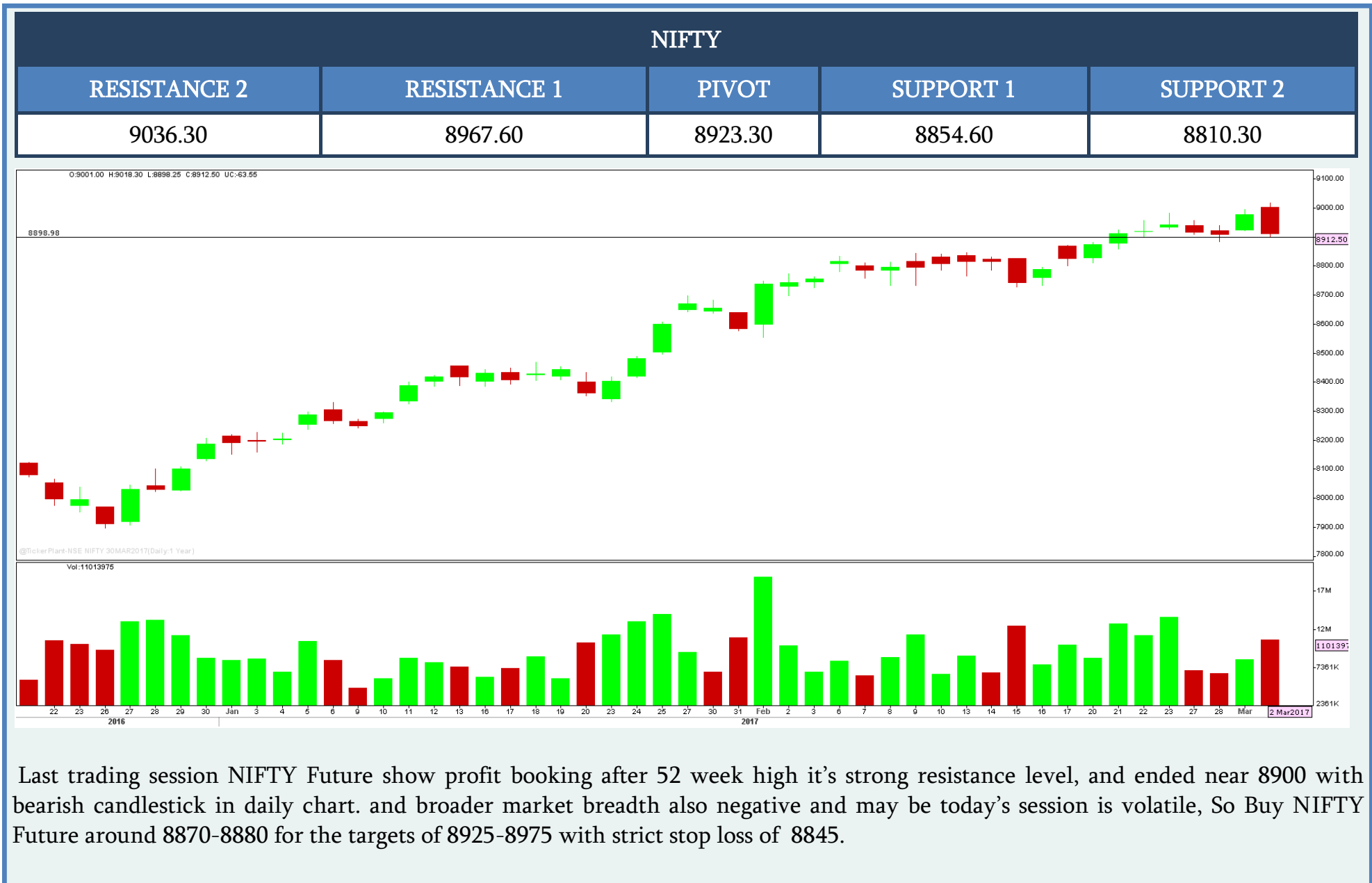
INDIAN INDICES

INDEX	CMP	Change	% Chg
NIFTY	8899.75	-46.05	-0.51
SENSEX	28839.79	-144.70	-0.50

SECTORAL INDICES

Index	Current	% Change	Open	High	Low	Prev. Close
CNX AUTO	9,705.50	0.36	9,756.10	9,820.55	9,679.25	9,670.60
CNX ENERGY	11,172.30	-0.93	11,329.70	11,364.80	11,128.55	11,277.35
CNX FINANCE	8,310.90	-0.79	8,411.40	8,428.60	8,295.90	8,377.35
CNX FMCG	22,417.30	-1.03	22,688.55	22,777.40	22,350.50	22,650.85
CNX INFRA	2,953.00	-1.39	3,009.85	3,011.30	2,946.50	2,994.75
CNX IT	10,741.60	-0.06	10,779.65	10,806.95	10,717.00	10,748.05
CNX MEDIA	2,958.55	-1.22	3,010.25	3,013.45	2,946.95	2,995.10
CNX METAL	3,166.30	-0.57	3,200.20	3,233.70	3,155.15	3,184.60
CNX MNC	10,616.50	-0.22	10,694.70	10,748.75	10,594.30	10,640.05
NI15	5,473.60	-0.12	5,495.60	5,506.50	5,463.85	5,480.30
CNX PHARMA	10,541.10	-1.49	10,743.75	10,754.80	10,512.55	10,700.80
CNX PSE	3,960.75	-1.36	4,034.50	4,044.30	3,954.80	4,015.30
CNX PSU BANK	3,247.00	-1.92	3,328.85	3,346.35	3,238.10	3,310.70
CNX REALTY	196.20	-4.22	206.45	206.65	195.35	204.85
CNX SERVICE	11,437.65	-0.79	11,573.65	11,584.45	11,418.15	11,529.30

03 MARCH 2017

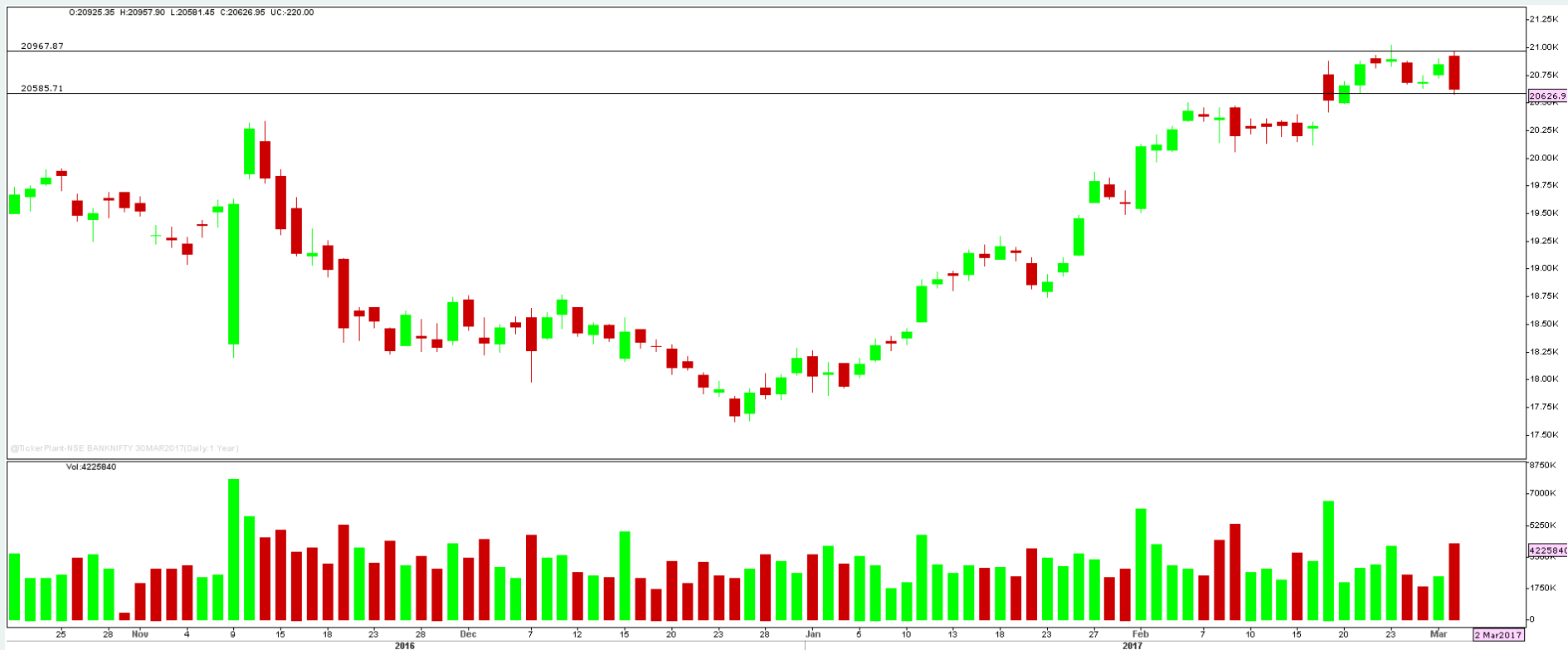


Last trading session NIFTY Future show profit booking after 52 week high it's strong resistance level, and ended near 8900 with bearish candlestick in daily chart. and broader market breadth also negative and may be today's session is volatile, So Buy NIFTY Future around 8870-8880 for the targets of 8925-8975 with strict stop loss of 8845.

03 MARCH 2017

BANKNIFTY

RESISTANCE 2	RESISTANCE 1	PIVOT	SUPPORT 1	SUPPORT 2
21049.00	20804.00	20660.00	20415.00	20271.00



Last trading session BANKNIFTY Future made a bearish candlestick in daily chart and made a high of 20950 but respect major resistance level 20900, and correct at higher level around 350 points and Bank nifty future break 20600 support level. So we can follow sell on rise strategy ,So sell Bank nifty future around 20800-20825 for the targets of 20650-20500 with strict stop loss of 20960.

03 MARCH 2017

BHARATFIN FUTURE



BHARATFIN Future show under pressure during the Day and break support level in daily chart and ended with bearish candlestick in daily chart, And since last session it rose with rising OI in short side, So if stock break previous day closing level we may see sharp downfall ahead . It will good to sell below 800 for the target of 790-775 with SL of 815.

03 MARCH 2017

ULTRACEMCO FUTURE



Last trading session ULTRACEMCO future show positive performance and close above major resistance level with strong bullish candle in daily chart. And since last session it rose with rising OI in long side .we expect the lead to good upside ahead. So we advise you to Buy on decline around 3800-3810 for the target of 3850-3900 with SL of 3750.

The information and views in this report, our website & all the service we provide are believed to be reliable, but we do not accept any responsibility (or liability) for errors of fact or opinion. Users have the right to choose the product/s that suits them the most.

Sincere efforts have been made to present the right investment perspective. The information contained herein is based on analysis and up on sources that we consider reliable. This material is for personal information and based upon it & takes no responsibility.

The information given herein should be treated as only factor, while making investment decision. The report does not provide individually tailor-made investment advice. Epic research recommends that investors independently evaluate particular investments and strategies, and encourages investors to seek the advice of a financial adviser. Epic research shall not be responsible for any transaction conducted based on the information given in this report, which is in violation of rules and regulations of NSE and BSE.

The share price projections shown are not necessarily indicative of future price performance. The information herein, together with all estimates and forecasts, can change without notice. Analyst or any person related to epic research might be holding positions in the stocks recommended. It is understood that anyone who is browsing through the site has done so at his free will and does not read any views expressed as a recommendation for which either the site or its owners or anyone can be held responsible for. Any surfing and reading of the information is the acceptance of this disclaimer. All Rights Reserved.

Investment in equity & bullion market has its own risks.

We, however, do not vouch for the accuracy or the completeness thereof. we are not responsible for any loss incurred whatsoever for any financial profits or loss which may arise from the recommendations above epic research does not purport to be an invitation or an offer to buy or sell any financial instrument. Our Clients (Paid Or Unpaid), Any third party or anyone else have no rights to forward or share our calls or SMS or Report or Any Information Provided by us to/with anyone which is received directly or indirectly by them. If found so then Serious Legal Actions can be taken.