

EPIC RESEARCH

India's Leading Financial Advisory
First to be Rated by **D&B**, **SMERA**
& **NSIC**



Our Presence

Epic Research India

411 Milinda Manor (Suites 409- 417)

2 RNT Marg. Opp Central Mall

Indore (M.P.)

Hotline: +91 731 664 2300

Or give us a missed call at

026 5309 0639

HNI & NRI Sales Contact Australia

Mintara Road, Tarneit, Victoria. Post Code 3029

Phone.: +61 422 063855

HNI & NRI Sales Contact USA

2117 Arbor Vista Dr. Charlotte (NC)

Cell: +1 704 249 2315

Toll Free Number

1-800-200-9454

All queries should be directed to

Info@epicresearch.co

02nd MARCH 2017

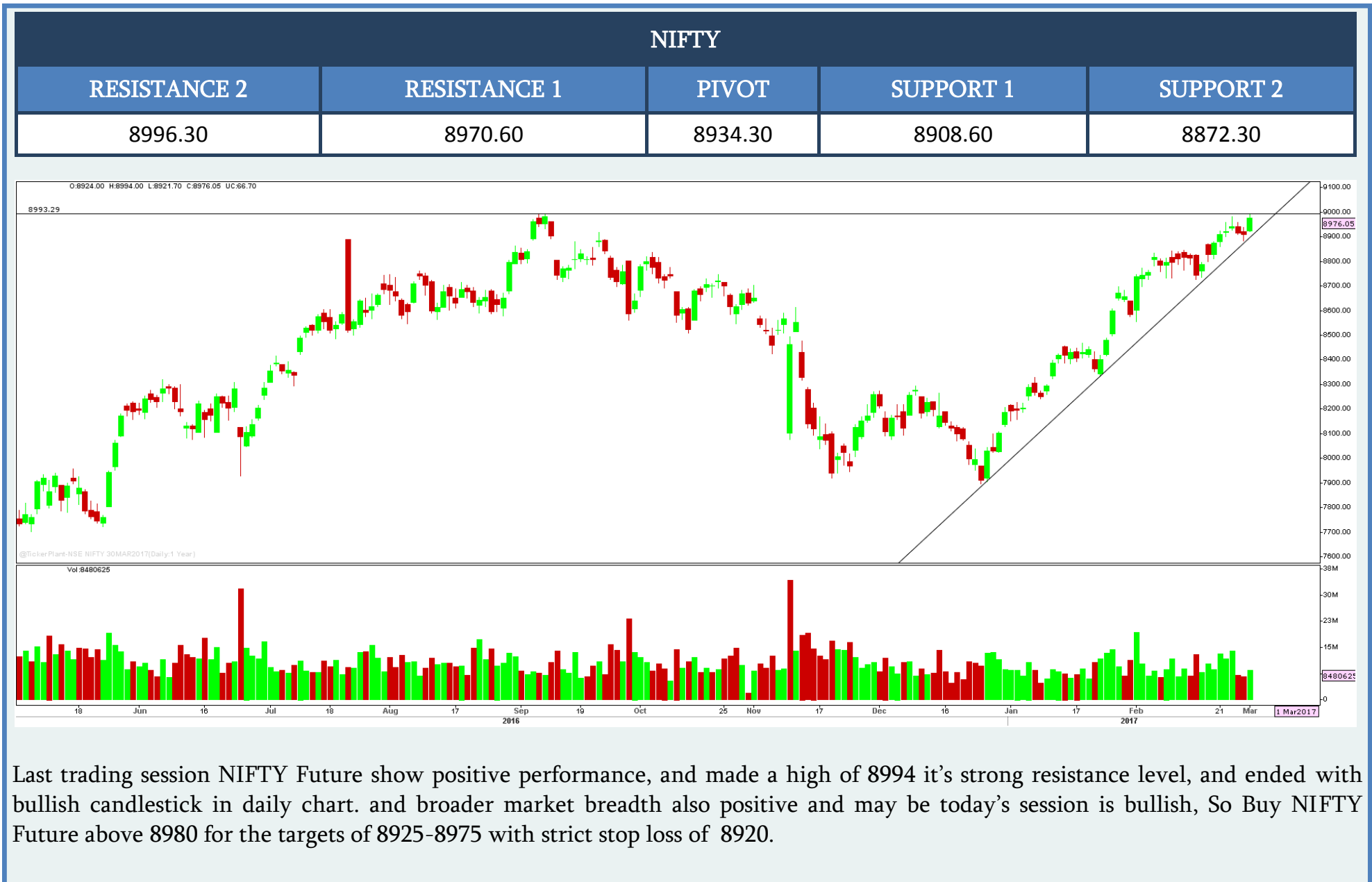
INDIAN INDICES

INDEX	CMP	Change	% Chg
NIFTY	8945.80	66.20	0.75
SENSEX	28984.49	241.17	0.84

SECTORAL INDICES

Index	Current	% Change	Open	High	Low	Prev. Close
CNX AUTO	9,670.60	0.17	9,682.85	9,702.00	9,616.60	9,654.65
CNX ENERGY	11,277.35	-0.73	11,389.45	11,402.05	11,257.45	11,360.20
CNX FINANCE	8,377.35	1.09	8,317.35	8,394.50	8,312.75	8,286.90
CNX FMCG	22,650.85	1.40	22,378.35	22,716.55	22,366.70	22,338.20
CNX INFRA	2,994.75	-0.10	3,008.75	3,018.80	2,990.35	2,997.85
CNX IT	10,748.05	0.63	10,674.85	10,777.60	10,658.40	10,680.95
CNX MEDIA	2,995.10	-0.04	3,004.20	3,009.85	2,983.85	2,996.35
CNX METAL	3,184.60	1.83	3,142.45	3,196.40	3,131.60	3,127.30
CNX MNC	10,640.05	0.27	10,648.25	10,675.45	10,617.40	10,611.00
NI15	5,480.30	0.90	5,447.80	5,489.80	5,443.95	5,431.40
CNX PHARMA	10,700.80	1.09	10,619.85	10,759.00	10,609.75	10,585.15
CNX PSE	4,015.30	-0.64	4,055.60	4,064.45	4,010.70	4,041.25
CNX PSU BANK	3,310.70	0.74	3,296.55	3,339.95	3,295.15	3,286.35
CNX REALTY	204.85	3.88	199.50	205.35	198.65	197.20
CNX SERVICE	11,529.30	0.72	11,479.70	11,560.35	11,469.85	11,446.70

02nd MARCH 2017

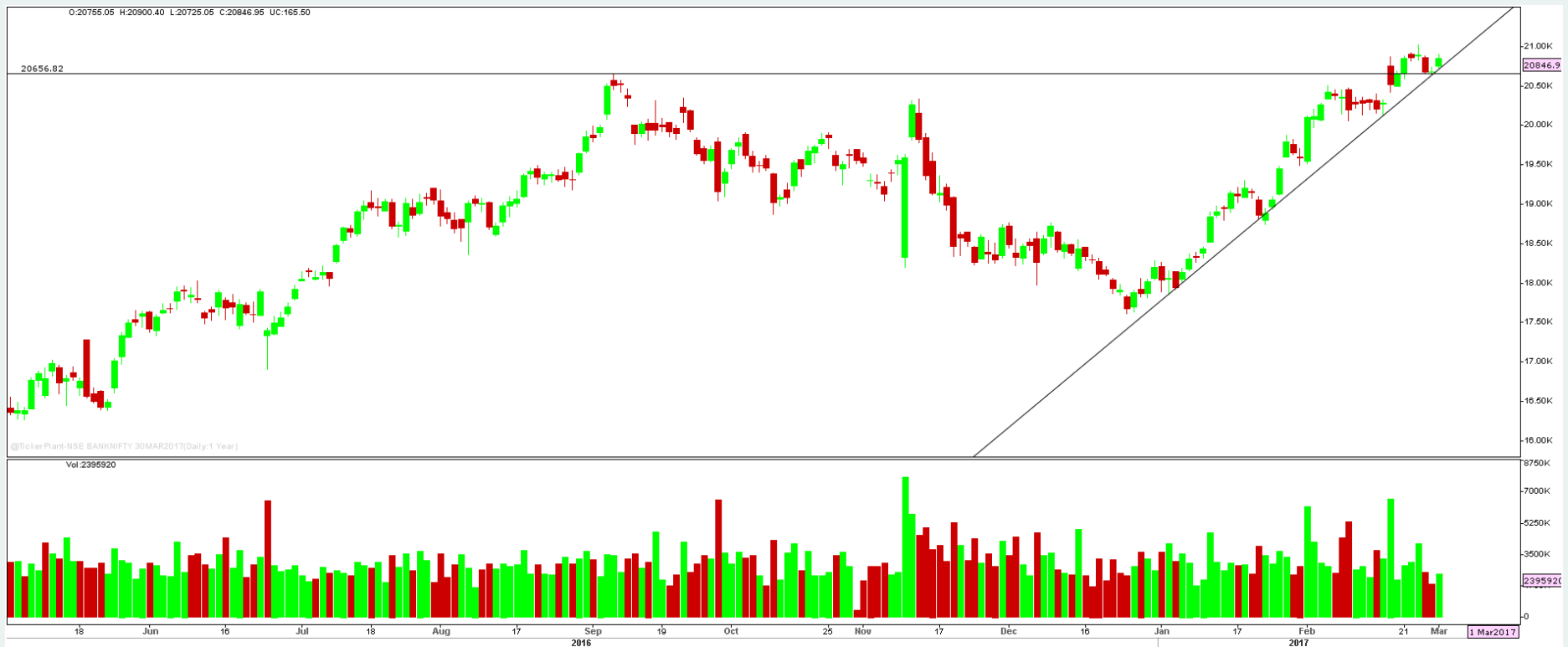


Last trading session NIFTY Future show positive performance, and made a high of 8994 it's strong resistance level, and ended with bullish candlestick in daily chart. and broader market breadth also positive and may be today's session is bullish, So Buy NIFTY Future above 8980 for the targets of 8925-8975 with strict stop loss of 8920.

02nd MARCH 2017

BANKNIFTY

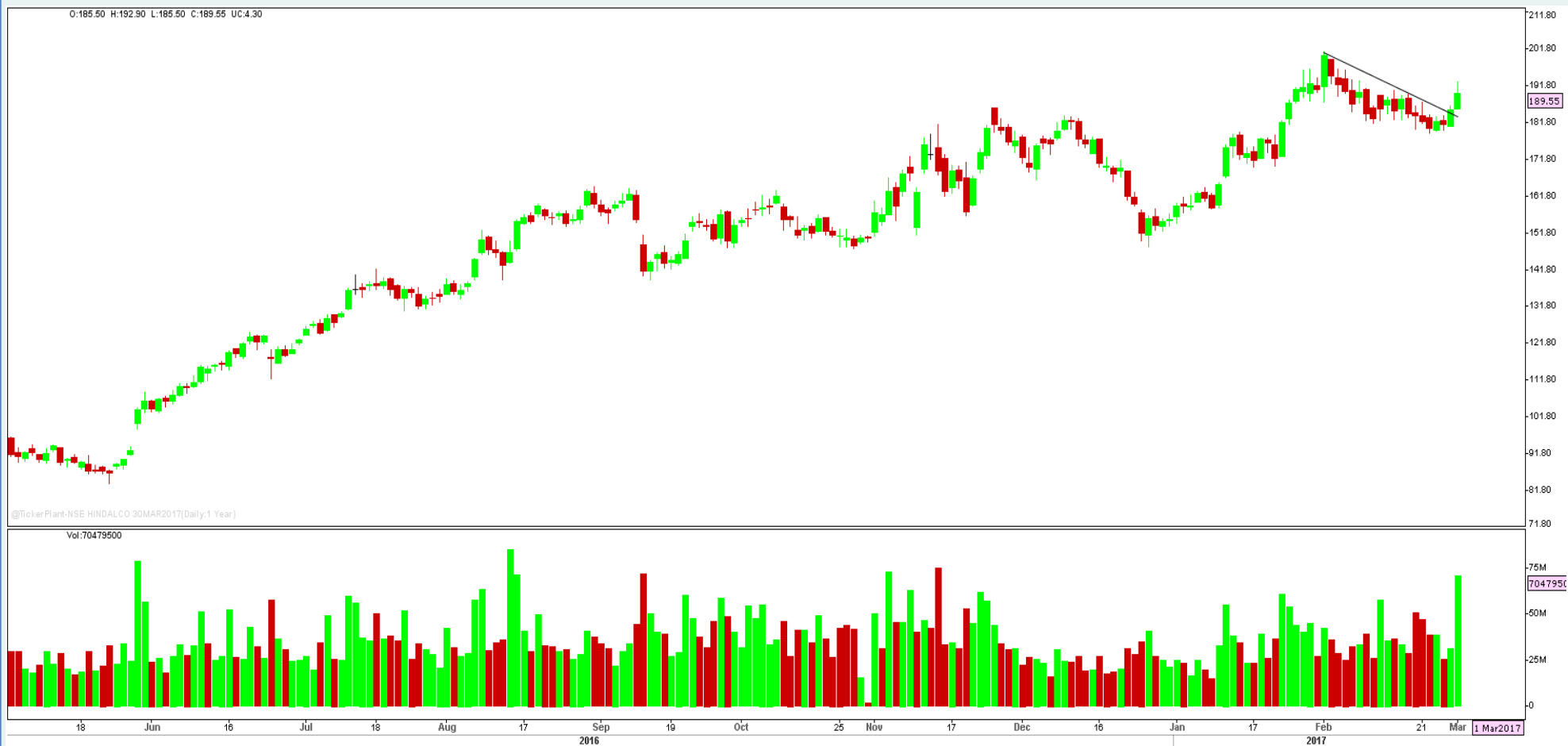
RESISTANCE 2	RESISTANCE 1	PIVOT	SUPPORT 1	SUPPORT 2
20919.00	20851.00	20764.00	20696.00	20609.00



Last trading session BANKNIFTY Future made a bullish candlestick in daily chart but respect major resistance level 20900, So if Bank nifty future cross 20900 level we can see sharp move ahead. and bank nifty future immediate support is 20750, So We advise follow buying strategy ,So buy Bank nifty future above 20940 for the targets of 21150-21300 with strict stop loss of 20750.

02nd MARCH 2017

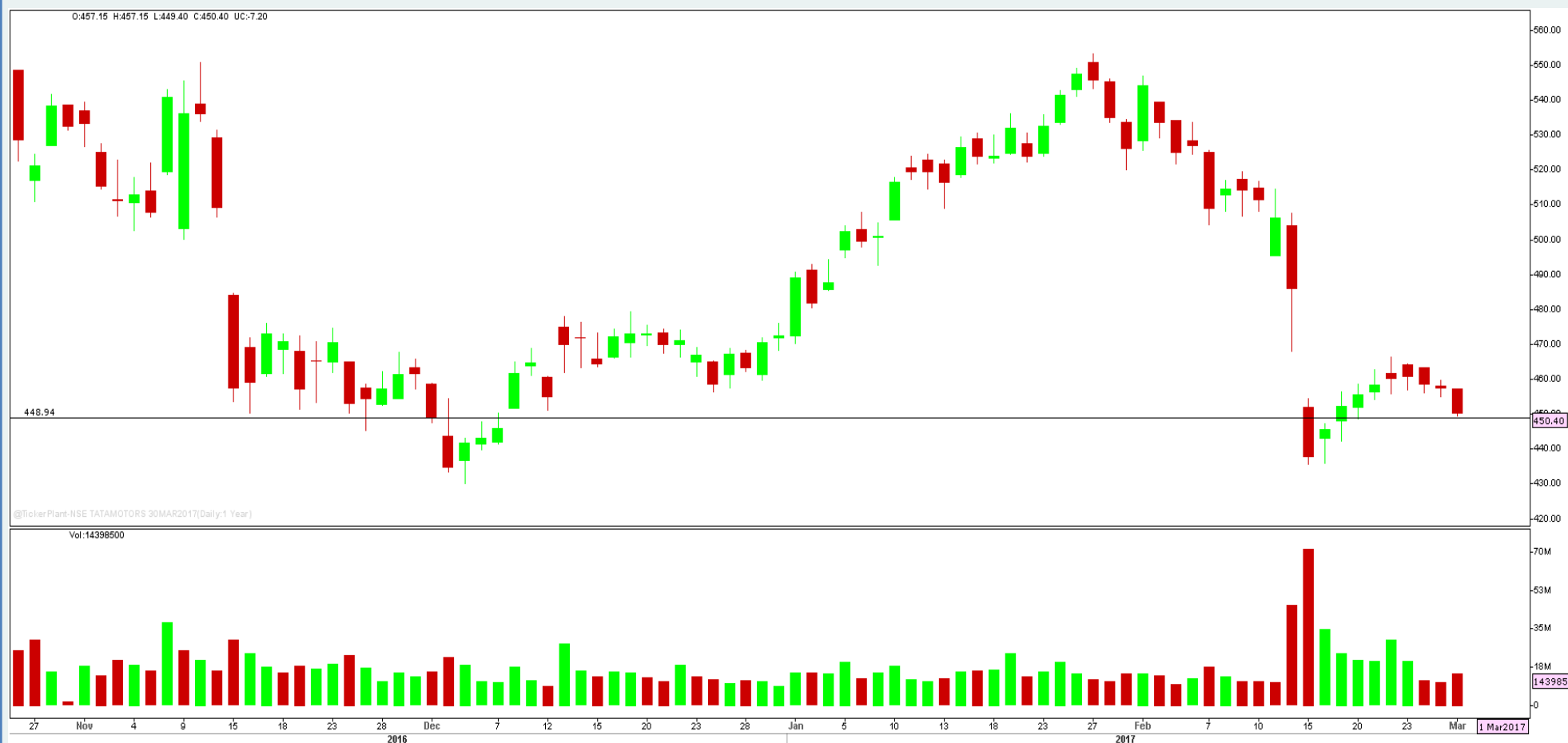
HIINDALCO FUTURE



Last trading session HINDALCO future show positive performance and close above major resistance level with strong bullish candle in daily chart. And since last session it rose with rising OI in long side .we expect the lead to good upside ahead. So we advise you to Buy on decline around 186-187 for the target of 190-193 with SL of 184.90.

02nd MARCH 2017

TATAMOTORS FUTURE



TATAMOTORS Future show under pressure during the Day and break support level in daily chart and ended near day's low with bearish candlestick in daily chart, And since last session it rose with rising OI in short side, So if stock break previous day low we may see sharp downfall ahead . It will good to sell below 449 for the target of 445-440 with SL of 453.

02nd MARCH 2017

The information and views in this report, our website & all the service we provide are believed to be reliable, but we do not accept any responsibility (or liability) for errors of fact or opinion. Users have the right to choose the product/s that suits them the most.

Sincere efforts have been made to present the right investment perspective. The information contained herein is based on analysis and up on sources that we consider reliable. This material is for personal information and based upon it & takes no responsibility.

The information given herein should be treated as only factor, while making investment decision. The report does not provide individually tailor-made investment advice. Epic research recommends that investors independently evaluate particular investments and strategies, and encourages investors to seek the advice of a financial adviser. Epic research shall not be responsible for any transaction conducted based on the information given in this report, which is in violation of rules and regulations of NSE and BSE.

The share price projections shown are not necessarily indicative of future price performance. The information herein, together with all estimates and forecasts, can change without notice. Analyst or any person related to epic research might be holding positions in the stocks recommended. It is understood that anyone who is browsing through the site has done so at his free will and does not read any views expressed as a recommendation for which either the site or its owners or anyone can be held responsible for. Any surfing and reading of the information is the acceptance of this disclaimer. All Rights Reserved.

Investment in equity & bullion market has its own risks.

We, however, do not vouch for the accuracy or the completeness thereof. we are not responsible for any loss incurred whatsoever for any financial profits or loss which may arise from the recommendations above epic research does not purport to be an invitation or an offer to buy or sell any financial instrument. Our Clients (Paid Or Unpaid), Any third party or anyone else have no rights to forward or share our calls or SMS or Report or Any Information Provided by us to/with anyone which is received directly or indirectly by them. If found so then Serious Legal Actions can be taken.