

WEEKLY COMEX COMMODITY REPORT



For More Information Please visit [www.epicresearch.co](http://www.epicresearch.co) or contact [info@epicresearch.co](mailto:info@epicresearch.co)

*Please refer to disclaimer at the end of the report.*



## WEEKLY COMEX COMMODITY REPORT

### WEEKLY MARKET OUTLOOK

#### PRECIOUS METALS AND INDUSTRIAL METALS

COMMODITY	UNITS	PRICE	CHANGE	% CHANGE	CONTRACT
COMEX GOLD	USD/T OZ.	1400.85	12.61	0.90	Aug-19
COMEX SILVER	USD/T OZ.	15.047	0.14	0.95	Sep-19
COMEX COPPER	USD/LB.	2.664	-0.03	-0.96	Sep-19
PLATINUM	USD/T OZ.	814.20	-6.11	-0.75	Oct-19

#### ENERGY COMMODITY FUTURES

COMMODITY	UNITS	PRICE	CHANGE	% CHANGE	CONTRACT
CRUDE OIL(WTI)	USD/BBL.	57.59	-1.46	-2.54	Aug-19
CRUDE OIL(BRENT)	USD/BBL.	64.25	-0.80	-1.25	Sep-19
NY. NATURAL GAS	USD/MMBTU	2.422	0.17	6.84	Aug-19
NY. HEATING OIL	USD/GAL.	1.9035	-0.05	-2.57	Aug-19

### SUPPORT & RESISTANCE

COMMODITY	SUPPORT-2	SUPPORT-1	PIVOT	RESISTANCE-1	RESISTANCE-2
<b>GOLD</b>	1390.15	1394.05	1398.95	1402.85	1407.75
<b>SILVER</b>	14.939	14.969	15.012	15.042	15.0858
<b>WTI CRUDEOIL</b>	53.70	55.60	57.94	59.84	62.18
<b>NATURALGAS</b>	2.132	2.275	2.360	2.503	2.588
<b>COPPER</b>	2.568	2.616	2.686	2.734	2.804

### LME BASE METALS OFFICIAL CASH PRICES ( \$/MT )

### LME WAREHOUSE STOCKS (INVENTORY)

METALS	PRICE	CHANGE	% CHANGE	METALS	INVENTORY CHANGE (MT)
<b>ALUMINIUM</b>	141.60	0.00	0.00	<b>ALUMINIUM</b>	-7100
<b>COPPER</b>	434.50	-1.85	-0.42	<b>COPPER</b>	31450
<b>LEAD</b>	151.60	-1.70	-1.11	<b>LEAD</b>	-275
<b>ZINC</b>	195.00	-4.00	-2.01	<b>ZINC</b>	-1750
<b>NICKEL</b>	873.25	-2.65	-0.34	<b>NICKEL</b>	78
<b>TIN</b>	1260.75	-14.75	-1.16	<b>TIN</b>	0

EPIC WEEKLY TOP PICKS

GOLD COMEX -DAILY CANDLESTICK CHART



**TRADING STRATEGY :**

**BUY GOLD ABOVE 1410 TGT 1420 1440 SL BELOW 1400**

**SELL GOLD BELOW 1390 TGT 1380 1360 SL ABOVE 1400**

EPIC WEEKLY TOP PICKS

SILVER COMEX -DAILY CANDLESTICK CHART



**TRADING STRATEGY :**

**BUY SILVER ABOVE 15.10 TGT 15.30 15.60 SL BELOW 14.90**

**SELL SILVER BELOW 14.90 TGT 14.70 14.40 SL ABOVE 15.10**

### EPIC WEEKLY TOP PICKS

#### CRUDEOIL-NYMEX-DAILY CANDLESTICK CHART



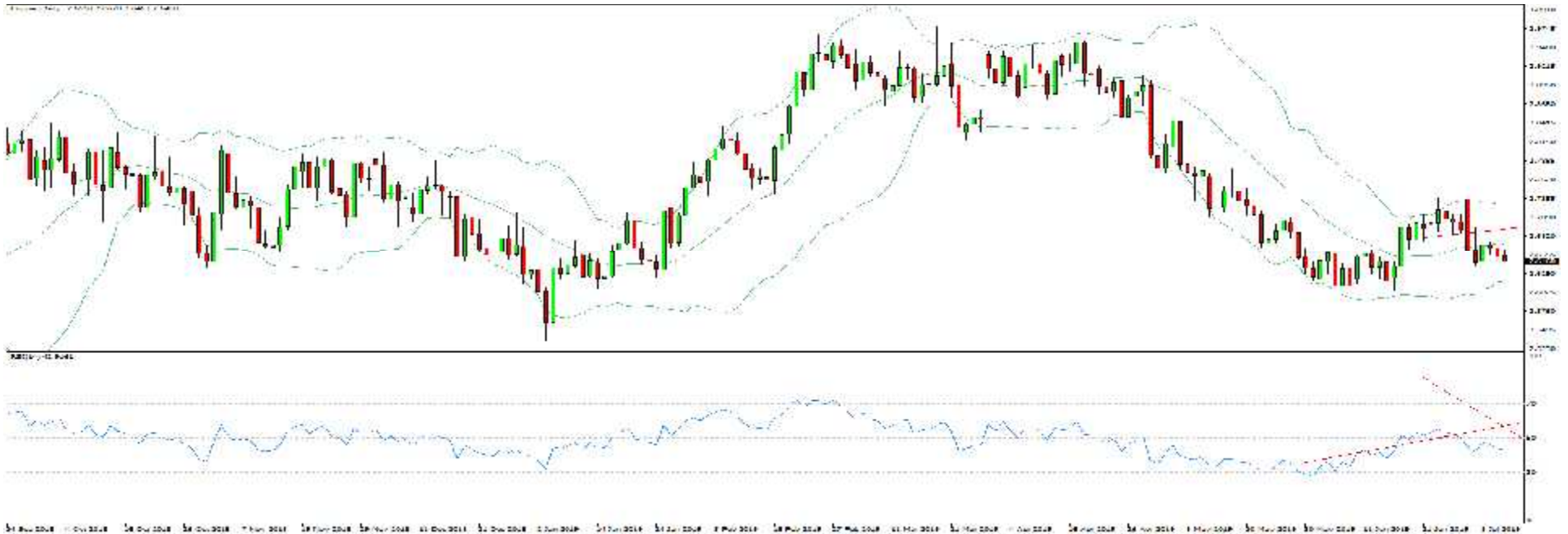
#### TRADING STRATEGY :

**BUY CRUDE OIL ABOVE 58.00 TGT 59.00 61.00 SL BELOW 57.00**

**SELL CRUDE OIL BELOW 57.00 TGT 55.00 53.00 SL ABOVE 58.00**

**EPIC WEEKLY TOP PICKS**

**COPPER COMEX -DAILY CANDLESTICK CHART**



**TRADING STRATEGY :**

**BUY COPPER ABOVE 2.6640 TGT 2.6840 2.7100 SL BELOW 2.6440**

**SELL COPPER BELOW 2.6430 TGT 2.6230 2.5950 SL ABOVE 2.6630**



## WEEKLY COMEX COMMODITY REPORT

**For India:** [Info@epicresearch.co](mailto:Info@epicresearch.co) **Address:** 8th Floor, Atulya IT Park, Bhawarkua Main Rd, Indore, (M.P.) 452014 **+91 -731- 6642300**

**For United States- HNI& NRI Sales Contact:** 2117 Arbor Vista Dr. Charlotte (NC)-**Cell: +1 704 249 23**

**For Australia- HNI & NRI Sales Contact:** Mintara Road, Tarneit, Victoria, Post Code 3029 **Cell: +61 422 063855**

**Singapore-** [www.epicresearch.sg](http://www.epicresearch.sg) **Contact +65-3158-1402**

**Malaysia-** [www.epicresearch.my](http://www.epicresearch.my) **Contact +60-3502-19047**

**Epic Research is one of India's largest Financial Advisory house. Epic Research is amongst leading and most valuable financial advisory provider companies in the private sector.**

### DISCLAIMER

The information and views in this report, our website & all the service we provide are believed to be reliable, but we do not accept any responsibility (or liability) for errors of fact or opinion. Users have the right to choose the product/s that suits them the most. Sincere efforts have been made to present the right investment perspective. The information contained herein is based on analysis and up on sources that we consider reliable. This material is for personal information and based upon it & takes no responsibility. The information given herein should be treated as only factor, while making investment decision. The report does not provide individually tailor-made investment advice. Epic research recommends that investors independently evaluate particular investments and strategies, and encourages investors to seek the advice of a financial adviser. Epic research shall not be responsible for any transaction conducted based on the information given in this report. The share price projections shown are not necessarily indicative of future price performance. The information herein, together with all estimates and forecasts, can change without notice. Analyst or any person related to epic research might be holding positions in the stocks recommended. It is understood that anyone who is browsing through the site has done so at his free will and does not read any views ex-pressed as a recommendation for which either the site or its owners or anyone can be held responsible. Any surfing and reading of the information is the acceptance of this disclaimer. Investment in equity, futures, Forex and commodity market has its own risks. We, however, do not vouch for the accuracy or the completeness thereof. We are not responsible for any loss incurred whatsoever for any financial profits or loss which may arise from the recommendations above epic research does not purport to be an invitation or an offer to buy or sell any financial instrument. Our Clients (Paid or Unpaid), any third party or anyone else have no rights to forward or share our calls or SMS or Report or Any Information Provided by us to/with anyone which is received directly or indirectly by them. If found so then Serious Legal Actions can be taken.